

OUR CORE TECHNOLOGY  
YOUR GREAT FUTURE

**Zhuhai Bentsai Electronics Co.,Ltd.**

Web:[www.bentsai.com](http://www.bentsai.com)

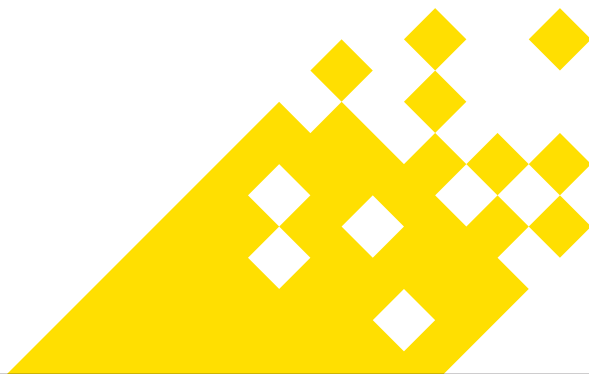
Add:2/F, Block B, Factory Building 1,  
115 Huawei Road, Xiangzhou District, Zhuhai

TPG-8114-04



# USER MANUAL

BT-HH6205/6210 Series  
(12.7mm/25.4mm)  
Handheld Inkjet Printer



# CONTENTS

## Contents

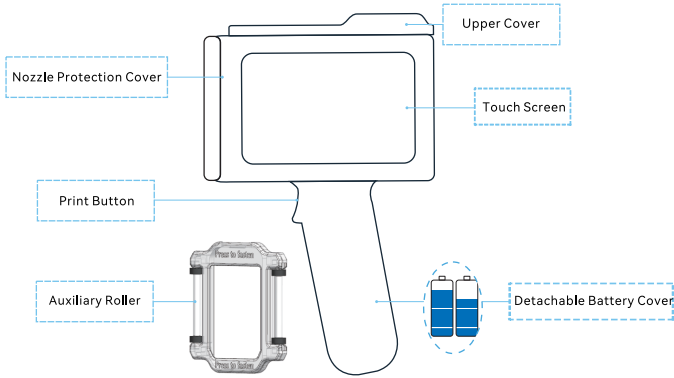
---

Parts Composition .....	1
Technical Specifications.....	2
Ink Cartridge Installation and Removal Guide.....	2
Features.....	4
Precautions .....	5
Operation Procedures .....	5
Main Menu–Simplified Mode .....	6
Main Menu–Advanced Mode .....	6
Troubleshooting .....	12
Error Messages Shown on Printer Screen and Solutions.....	12
Packing List .....	13
Warning .....	13
Warranty Instructions .....	14

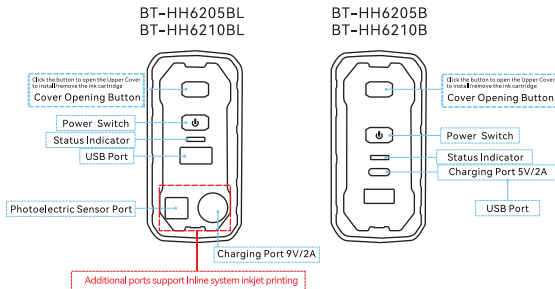


## Parts Composition

### 1 Mechanical Diagram

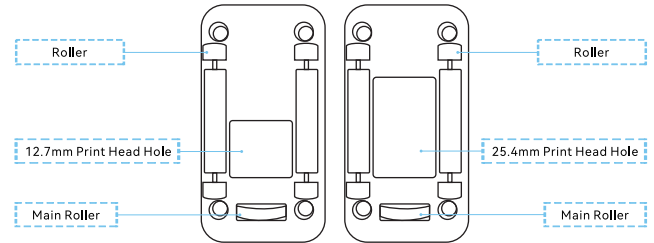


### 2 Buttons, Ports and Available Options

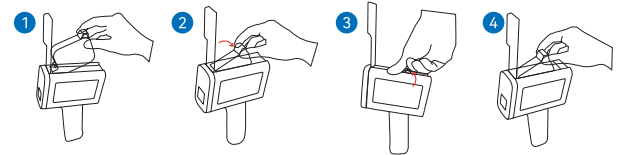


### 3

Differences between 12.7mm and 25.4mm printhead



## Ink Cartridge Installation and Removal Guide



### Ink Cartridge Installation

- ① Open the printer up cover, hold the ink cartridge with the printhead facing inward at a 45° angle, and insert it into the printer's cartridge compartment.
- ② Press down the ink cartridge and push the printhead into the hole of the printer to ensure that the ink cartridge is installed in place.

### Ink Cartridge Removal

- ③ Place your thumb on the edge of the printer as the point of force, and use your index finger to press against the protruding part of the ink cartridge, lifting it slightly with force.
- ④ Take out the cartridge and cover it with cartridge clip.

**!** If it is your first time installation, please observe carefully and gently apply pressure, avoiding using excessive force to prevent damaging the printer contact needles and ink cartridge.



## Technical Specifications

Content	Parameter			
Name	BT-HH6205B	BT-HH6205BL	BT-HH6210B	BT-HH6210BL
	Half-inch handheld inkjet printer	Half-inch inline/ Handheld inkjet printer	One-inch handheld inkjet printer	One-inch inline/ Handheld inkjet printer
Output voltage	DC 5V/2A	DC 9V/2A	DC 5V/2A	DC 9V/2A
Operating mode	Handheld mode/ Continuous mode	Handheld mode/ Continuous mode/ Photoelectric mode	Handheld mode/ Continuous mode	Handheld mode/ Continuous mode/ Photoelectric mode
External interface	USB	USB, Photoelectric	USB	USB, Photoelectric
Package size	275x115x250mm			
Net weight	420g		430g	
Printing accuracy	300/600DPI		300DPI	
Printing height	12.7mm		25.4mm	
Max.Print size	12.7x406mm		25.4x406mm	
Operating system	Linux			
Printing technology	Thermal Inkjet			
Screen	4.3-inch touch screen			
Status indicator	<b>Green:</b> Ready <b>Blue:</b> Printing <b>Red:</b> Alarm			
Language	Multi-language, see Language setting of the printer			
Printing distance	2-5mm (Ink throw distance)			
Ink capacity	42ml			
Standby time	16hours			
Printing content	Text, QR code, barcode, time, number, image, database, etc.			
Printing font	True type fonts, dot matrix fonts			
Battery parameters	Lithium battery pack			
Operating environment	Temperature 5-35°C (15-35°C recommended), humidity 10%-80%			

## Technical Specifications

Content	Parameter
Ink cartridges type	<b>Porous and Semi-porous substrates:</b> Water-based ink cartridges <b>Non-porous substrates:</b> Solvent-based Quick dry ink cartridges
Ink cartridges	Solvent-based: Black, White, Magenta, Yellow, Cyan, Green, Anti-counterfeit Water-based: Black, Magenta, Yellow, Cyan

## Features

01 Quad-core CPU






02 Thermal inkjet technology

03 Large-capacity rechargeable and detachable battery

04 300/600dpi HD printing quality



05 4.3-inch color HD LCD capacitive touch screen

## Precautions

-  Do not use non-genuine ink cartridges.
-  After printing, close the protection cover of the nozzle in a timely manner to prevent ink nozzles from clogging.
-  Do not remove the smart chip stuck on the cartridge, otherwise, the printer would not work.
-  When cleaning the printer keep it away from water and do not use chemical solvents for cleaning.
-  In case of any malfunction of the printer, see **Troubleshooting**. Do not disassemble the printer without professional instructions.



## Precautions

-  Do not place the printer in a humid environment for a long time, otherwise the circuit will get damp.
-  Once the battery is reinstalled, reset the system date of the printer.

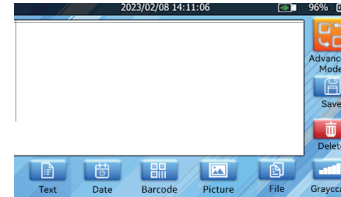
## Operation Procedures

**①Ink Cartridge Installation:** Press the upper cover opening button to open the upper cover, insert the ink cartridge into the printer, and close the upper cover.

**②Simplified Mode:** Turn on by pressing power button → [Print Edit] → Edit content → Remove nozzle cover → Align the rollers with the surface, press and hold the print button until hear "beep", then slide at a constant speed → Release the button and lift the printer upon hear another "beep" → Click [Cancel] to complete printing → Close the nozzle cover.

**Advanced Mode:** Turn on by pressing power button → [Print Edit] → Select content → Edit → Click "print" button → Remove nozzle cover → Align the rollers with the surface → press and hold the print button until hear "beep", then slide at a constant speed → Release the button and lift the printer → Click "Cancel" to complete printing → Close the nozzle cover.

## Main Menu-Simplified Mode



### Edit in Simplified Mode

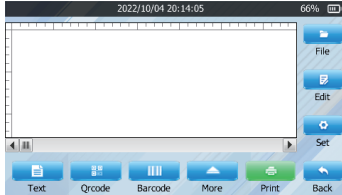
- Text: Add the text content to be printed and set the font size and type.
  - Date: Automatically display system date, adjustable in format and size.
  - Barcode: Click on the barcode to change the string content, select the encoding type and size.
  - Picture: Open the image imported into printer by the USB disk, and adjust its size accordingly.
  - File: Open the saved printing file, search for files, rename files, and preview file content.
  - Grayscale: Set the grey scale level and select the nozzle (right or left nozzle).
  - Delete: Delete the edited content.
  - Advanced Mode: Switch to advanced mode.
  - Print: Press the print button on the printer's handle to start printing your edited content.
- There are two operation models in our printer, Advanced model and Simplified Model(Concise Model).End users could press the icon to switch between the two models based on using habits and preference.**

## Main Menu-Advanced Mode





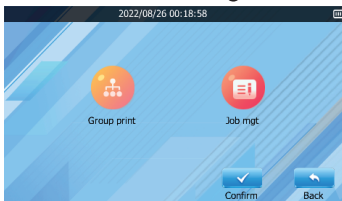
## Print Edit



### Edit what you want to print

- Text: Input your text to be printed, set and adjust the format such as character size.
- QR code: Click the QR code interface, input your content and the system will automatically generate the QR code in the textbox. Set and adjust the QR code size before printing.
- Barcode: Add a string, Select code type and then to set and adjust height/width. Edited barcodes can be previewed.
- More: Edit and print the Time/Number/Image/Database content.
- File: Open a saved print file, or save the currently edited content.
- Edit: Fine-tune, re-edit, delete, or change the text.
- Settings: Set printing parameters.
- Print: Click the Print button and the printer starts printing.
- Back: Return to the main menu.

## Print Management



### Group printing and job management

- Group printing: Add multiple printing files to the print list, and print the file list in sequence.
- Job management: Rename or delete the print files.

## System Settings



- Print settings: Set print parameters.
- Tone settings: Set the tones.
- Power: Set the standby and shutdown time.
- Cartridge setting: The printer will automatically identify water-based or solvent ink cartridges when the cartridge is installed.
- Language: Set system language.
- Time: Set system time.
- Factory default: Reset system parameters.

## Print Settings

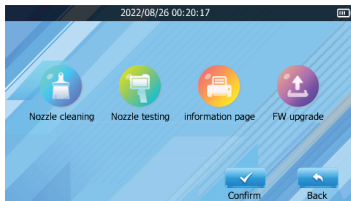


- Printing mode: Handheld, Continuous, Photoelectric . **Continuous** model is for repeated printing setting for a specific print job. **Photoelectric** is for conveyor printing use.
- Resolution: 300/600dpi.
- Printing direction: left to right, right to left.
- Nozzle select: left nozzle, right nozzle, Bilateral nozzles(only applicable for half inch cartridge printers).
- Gray Level: 1-5 adjustable.Reduce the gray level will make the printouts be lighter in density and reduce ink consumption.
- Speed: 20-500mm/s (Photoelectric and Continuous mode) for half inch cartridge printer and Max conveyor speed at 30 meters/ minute. For one inch cartridge printer,



- the speed range is 20–250 mm/s, max conveyor speed at 15 meters/minute.
- Delay: 0–500mm, used for Photoelectric mode.
  - Printing interval: 50–2,000mm adjustable.  
It refers to the distance between the point where the printed object is sensed and the point where the printer starts printing.
  - Repetition: Set the total number of single printing in continuous mode.
  - Synchronous wheel: The continuous mode and Photoelectric mode can be disabled.

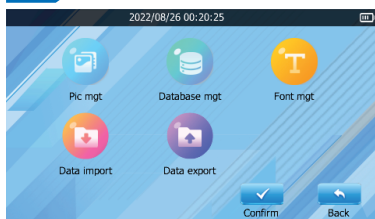
## Device Maintenance



Maintenance for printer and ink cartridges and system firmware upgrades.

- ! **Ensure that the printer remaining power is above 50% before firmware upgrade. In case power low, connect the charger during the upgrading process. Power off during the upgrade process may damage the printer.**

## U-Disk



Mobile storage: picture management, database management, font management, data import, data export.

- ! **The imported and exported files and images should be named with numbers and letters only, no special symbols.**
- ! **For database printing, the database file needs to be in TXT or CSV format saved as "Unicode text (\*.txt)" or CSVUTF-8 (\*.CSV).**

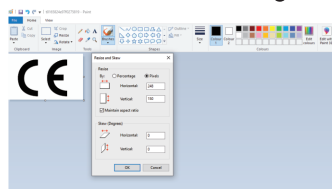
## Font Management

name	Date	Type	Size
.\ FZCCJHW	2000/12/25	TrueType	1,805 KB
.\ FZCYJHW	2000/12/28	TrueType	4,223 KB
.\ FZDLJHW	2000/12/28	TrueType	6,598 KB
.\ FZHGJHW	2000/8/1	TrueType	4,047 KB
.\ FZJZHW	2000/10/24	TrueType	1,473 KB
.\ FZJCSHW	2019/10/11	TrueType	3,718 KB
.\ FZMHW	2000/8/1	TrueType	2,187 KB
.\ FZNTJHW	1999/3/6	TrueType	4,508 KB
.\ FZPTJHW	2000/10/24	TrueType	2,962 KB
.\ FZSEJHW	1999/9/7	TrueType	3,395 KB
.\ FZSJJHW	2000/8/1	TrueType	5,517 KB
.\ FZSJJHW	2000/8/1	TrueType	4,517 KB
.\ FZSJJHW	2000/10/24	TrueType	7,420 KB
.\ FZSKJHW	1997/12/18	TrueType	9,209 KB

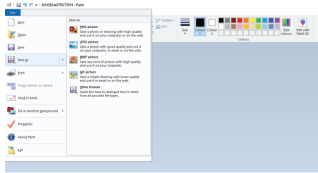
Click to install, uninstall or delete the fonts as needed. The TTF font package is stored in the fonts folder in the USB flash drive comes with the printer box. When the USB flash drive with saved fonts is plugged into the printer, the fonts will be installed automatically.

- ! **Please keep the USB flash drive plugged in with your printer when using your fonts.**

## Picture Printing



- Step 1: Use your computer's drawing tool to open and edit your picture (logo, graphics etc.) size.
- ! **The pixels of images of 12.7mm printer cannot exceed 4800\*150, and the pixels images of 25.4mm printer cannot exceed 9600\*400 (Horizontal\* Vertical).**

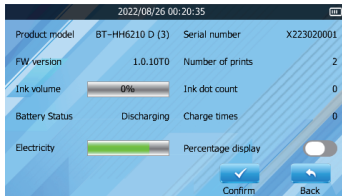


- Step 2: Save the edited picture as a bmp, jpg, or png file, and name it with letters or numbers only.

database	2022/8/24	22:...
fonts	2022/8/24	22:...
jobs	2022/8/24	22:...
pictures	2022/8/24	22:...

- Step 3: Copy the picture file into the pictures folder of the USB flash drive (the USB drive provided by the manufacturer along with the printer ), and plug the USB flash drive into the printer to print the picture.  
If you are using your own USB flash drive, please plug it into the printer first and the printer will automatically generate the specified folder in the USB flash drive and then store the files in the correct folder.

## Device Information



Check product models, firmware versions, ink cartridge status, battery status, charging times, number of ink droplets, remaining power, and battery level % display.

## Troubleshooting

No.	Failures	Cause	Solutions
1	Failed to power on	Low battery, or damaged	Recharge/Replace the battery
		Poor Battery Contact	Reinstall the battery
2	Failed to print	Incorrect ink cartridge installation	Reinstall the ink cartridge
		Ink cartridge depleted	Replace with a new ink cartridge
		Incorrect parameter settings	Restore factory settings
		Wrongly edited print content	Re-edit your print content
3	Unclear Printing	Abnormal roller rolling	Clean debris on the roller gaps
		Incorrect parameter settings	Restore factory settings
		Clogged ink nozzles	Clean the ink nozzles
		Ink cartridge depleted	Replace with a new ink cartridge
		Insufficient power	Recharge or replace the battery

## Error messages shown on printer screen and Solutions

No.	Error Message	Error Message Code	Solutions
1	Ink cartridge not installed	NA	Reinstall the ink cartridge
2	Ink cartridge not recognized	03	Replace the cartridge or cartridge smart chip
3	Ink cartridge error	04/05/07/08	Replace the cartridge or cartridge smart chip
4	Ink cartridge error	06	Incorrect cartridge installed, replace with the correct cartridge model
5	Ink low	NA	Ink volume less than 20%
6	Ink finished	NA	Ink dots count reaches 1,140,000





## Packing List

No.	Name		Quantity
1	12.7mm/25.4mm Inline Inkjet Printer	12.7mm/25.4mm Handheld Inkjet Printer	1set
2	Original ink cartridge		1pcs
3	User Manual		1pcs
4	Quality Inspection Certificate		1sheet
5	Power adapter	Charging cable	1pcs
6	USB flash drive		1pcs
7	Positioning plate		1pcs
8	Auxiliary Roller		1pcs
9	Photoelectric sensor	No	1pcs

## Warning

Replacing the battery with an incorrect type may bring the risk of fire, explosion, or damage to the device. Replace only with the same or equivalent battery type.

Throwing a battery into a fire, into a hot oven, mechanically crushing or cutting a battery can cause an explosion.

Exposing the battery to extremely high temperature or low pressure may result in an explosion or leakage of flammable liquid or gas.

## Warranty Instructions

Dear customer,

Thank you for purchasing our handheld/inline inkjet printer! To ensure the safe use of the product and your benefits and interests, please read the following content carefully, fill in and keep the warranty card properly.

This product is a precision instrument. In case of any malfunction, refer to this manual for troubleshooting or contact the customer service center of your seller.

### ■ Term of Service

1. This product is with a one-year warranty period. The starting date of the warranty period is subject to the date of the product invoice.
2. During the warranty period, if the product is under normal use and maintenance and failure is caused by the quality of the machine itself, the company will provide free repair and replacement parts.
3. Vulnerable parts are excluded, such as ink cartridges, screens, removable storage, switches, chargers, batteries, which shall not be covered by the warranty.

### ■ Disclaimer

Any of the following conditions shall not be covered by the warranty:

1. Damage due to improper transportation, use, storage, and maintenance, or man-made damage.
2. Unauthorized repair or the user installs, disassembles, and repairs the machine by himself.
3. Damages caused by using non-genuine consumables or accessories which are not provided by the original manufacturer.
4. Missed or modified warranty card.
5. Beyond the warranty period.
6. Damage caused by force majeure.



## Warranty Card

### Product Related information

---

Customer name : \_\_\_\_\_ Contact phone : \_\_\_\_\_

Mailing address : \_\_\_\_\_

Product model : \_\_\_\_\_ Product ID: \_\_\_\_\_

Store purchased: \_\_\_\_\_ Purchase date : \_\_\_\_\_

Maintenance store : \_\_\_\_\_ Invoice No.: \_\_\_\_\_

### Maintenance record

---

Date of Maintenance: \_\_\_\_\_

Failure Description: \_\_\_\_\_

Solution : \_\_\_\_\_

Maintained by: \_\_\_\_\_ Contact Phone: \_\_\_\_\_ Staff Signature: \_\_\_\_\_

Fill in this warranty card in time after purchasing this printer.  
Please keep the warranty card properly, and it is not required to send it back to the seller. Carry the warranty card and the original invoice for maintenance.

Zhuhai Bentsai Electronics Co.,Ltd.